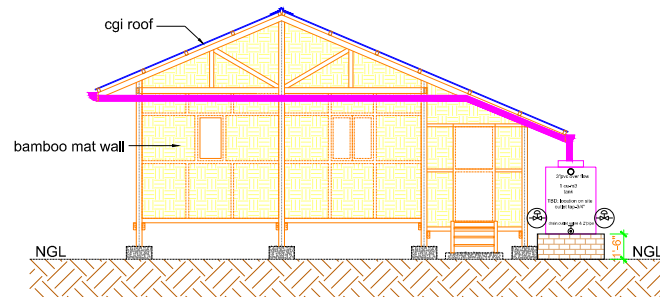
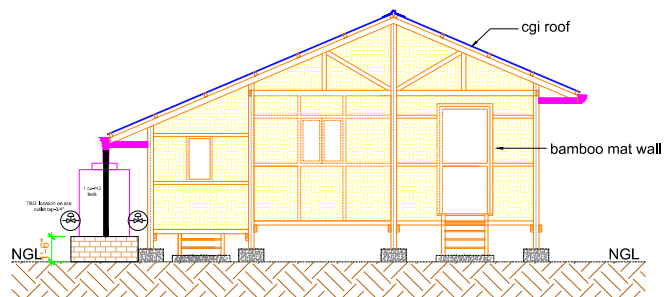


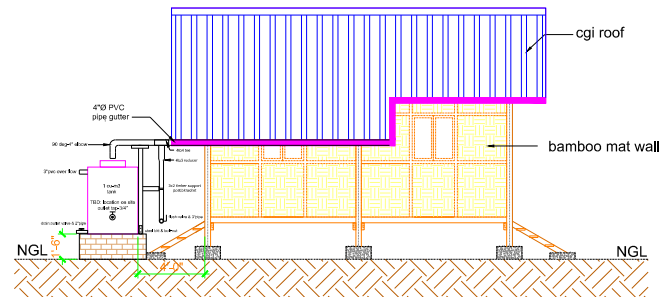
## PERMANENT SHELTER DESIGN



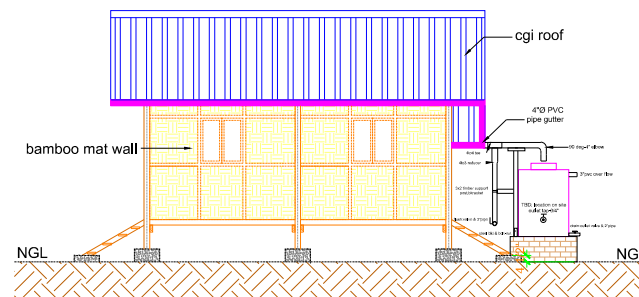
BACK VIEW



FRONT VIEW



LEFT SIDE VIEW



RIGHT SIDE VIEW

PS : Permanent Shelter  
Floor Area = 306 sq-ft  
or 28.44m<sup>2</sup>

RAKHINE STATE

### **Specification**

Dim: 18' x 17' x 8'  
30g cgi roof, ridge piece  
timber framing structure  
bamboo mat wall  
bamboo floor with timber  
support  
concrete footing  
2' to floor from NGL  
stair=2 set  
timber post-4"x4"

DWG SHEET 2